

Human LIGHT/TNFSF14 Protein

Cat. No. LGT-HM131

Description

| | |
|-------------------------|--|
| Source | Recombinant Human LIGHT/TNFSF14 Protein is expressed from HEK293 with His tag at the N-Terminus. It contains Asp74-Val240. |
| Accession | O43557-1 |
| Molecular Weight | The protein has a predicted MW of 19 kDa. Due to glycosylation, the protein migrates to 25-30 kDa based on Tris-Bis PAGE result. |
| Endotoxin | Less than 1EU per μg by the LAL method. |
| Purity | > 95% as determined by Tris-Bis PAGE |

Formulation and Storage

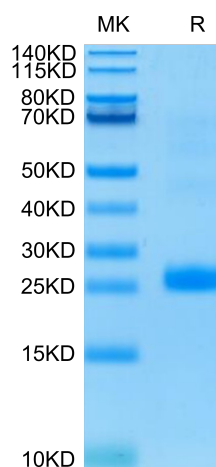
| | |
|-----------------------|--|
| Formulation | Lyophilized from 0.22 μm filtered solution in PBS (pH 7.4). Normally 8% trehalose is added as protectant before lyophilization. |
| Reconstitution | Centrifuge the tube before opening. Reconstituting to a concentration more than 100 $\mu\text{g}/\text{ml}$ is recommended. Dissolve the lyophilized protein in distilled water. |
| Storage | -20 to -80°C for 24 months as supplied from date of receipt. -80°C for 3-6 months after reconstitution. 2-8°C for 2-7 days after reconstitution. Recommend to aliquot the protein into smaller quantities for optimal storage. Please minimize freeze-thaw cycles. |

Background

LIGHT, also known as tumor necrosis factor superfamily member 14 (TNFSF14), is a secreted protein of the TNF superfamily. It is recognized by herpesvirus entry mediator (HVEM), as well as decoy receptor 3. This protein has been shown to stimulate the proliferation of T cells, and trigger apoptosis of various tumor cells.

Assay Data

Tris-Bis PAGE

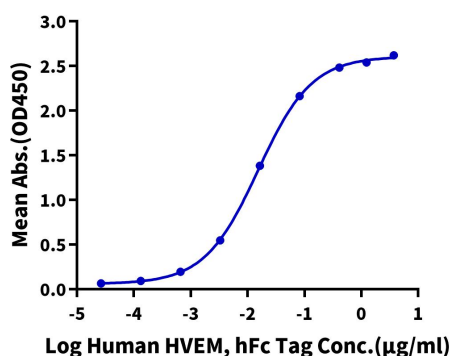


Human LIGHT on Tris-Bis PAGE under reduced condition. The purity is greater than 95%.

ELISA Data

Human LIGHT, His Tag ELISA

0.2 μg Human LIGHT, His Tag Per Well



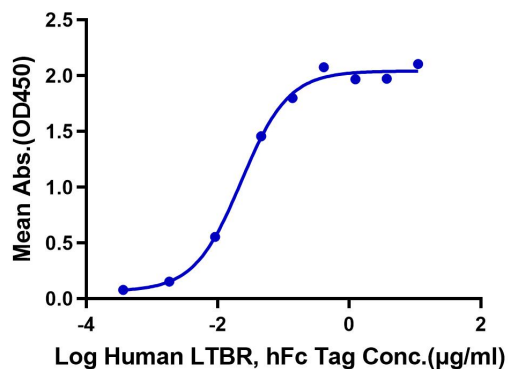
Immobilized Human LIGHT, His Tag at 2 $\mu\text{g}/\text{ml}$ (100 $\mu\text{l}/\text{Well}$) on the plate. Dose response curve for Human HVEM, hFc Tag with the EC₅₀ of 15.3ng/ml determined by ELISA (QC Test).

Assay Data

ELISA Data

Human LIGHT, His Tag ELISA

0.05µg Human LIGHT, His Tag Per Well



Immobilized Human LIGHT, His Tag at 0.5µg/ml (100µl/Well) on the plate. Dose response curve for Human LTBR, hFc Tag with the EC50 22.9ng/ml determined by ELISA.